



# West Elk U.S.D. 282

P.O. Box 607 Howard, Kansas 67349 (620) 374-2113 - Fax (620) 374-2414

November 26, 2018

## INVITATION TO BID

West Elk USD #282 is seeking bids to mow, trim and spray the West Elk campus as follows:

**Timeline:** April 1, 2019 through September 30, 2019.

### **Requirements:**

1. Certificate of Liability Insurance provided to Central Office.
2. Background checks conducted on all parties that will be working on campus.
3. Mow and trim once a week. May spray weeds once a month with spray approved by the Maintenance Supervisor. Do not spray around the school buildings.
4. Mowing will be coordinated with the Maintenance Supervisor and align with the District Activity Calendar.
5. Grass will be cut at 3".
6. Areas to be mowed on attached map. Ball playing fields are not included.

Sealed bids must be delivered or mailed to the West Elk USD #282 Central Office, 1201 State Hwy 99, PO Box 607, Howard, Kansas 67349; may be faxed to 620-374-2414; or e-mailed to [mcalisterp@westelk.us](mailto:mcalisterp@westelk.us)) on or before 12:00 noon, on Monday, December 10, 2018.

Bids will be opened at 1:00 P.M., on Monday, December 10, 2018, at the District Office in Howard.

The Board reserves the right to reject any or all bids.

Sincerely,

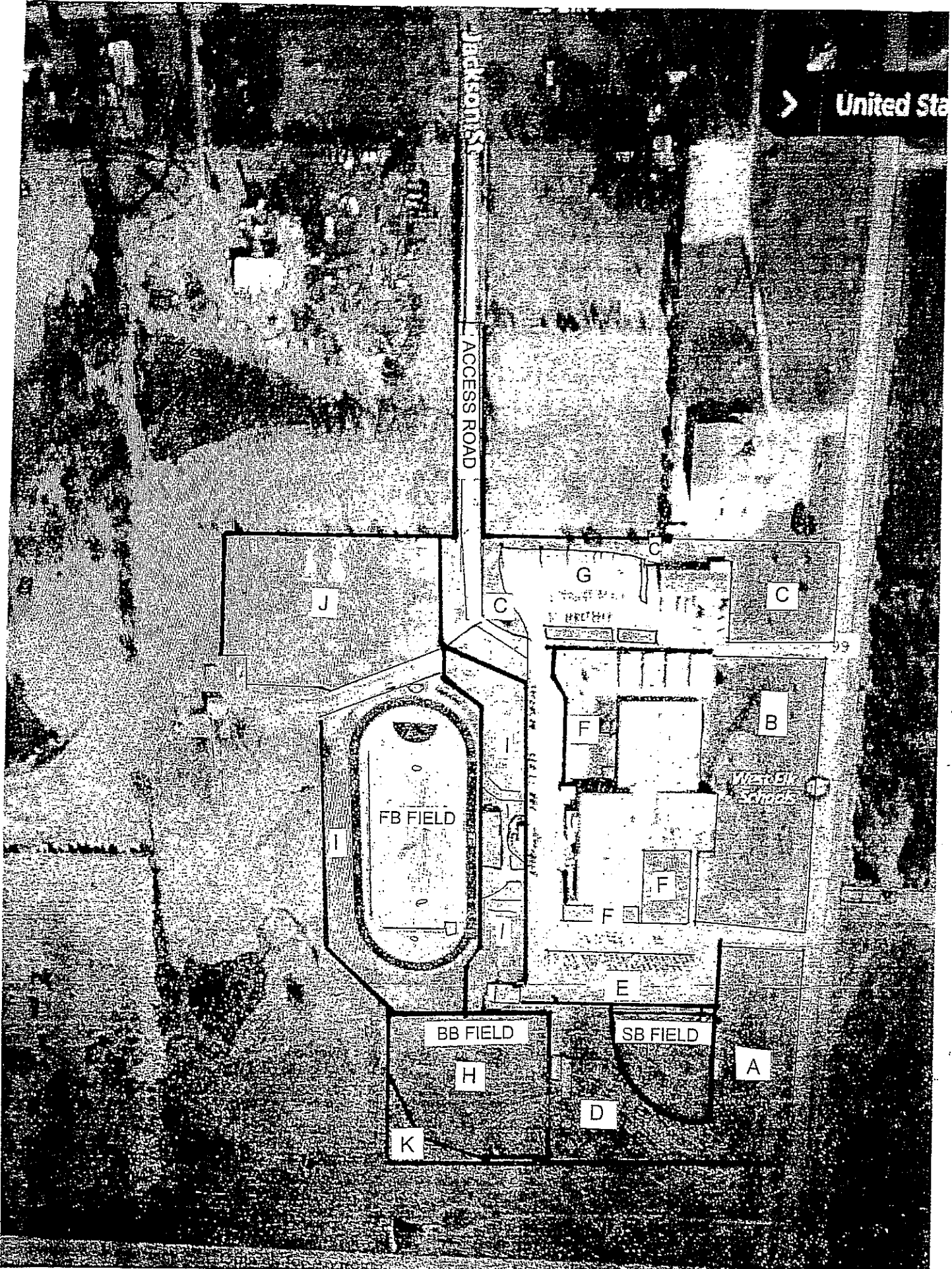
Bert Moore  
Superintendent

N

United States

JACKSON ST  
ACCESS ROAD

W



## Section A

- \_\_\_1 Mow once a week
- \_\_\_2 Weed eat & spray weed killer at south culvert & ditch
- \_\_\_3 Weed eat & spray ditch & culvert, NE corner
- \_\_\_4 Weed eat & spray fence, NW section A
- \_\_\_5 Weed eat & spray around press box
- \_\_\_6 Weed eat & spray under 3 bleachers
- \_\_\_7 Weed eat around dugout
- \_\_\_8 Weed eat & spray South fence line
- \_\_\_9 Weed eat & spray along sidewalk
- \_\_\_10 Weed eat along driveway
- \_\_\_11 Weed eat along highway
- \_\_\_12 Weed eat & spray softball fence
- \_\_\_13 Weed eat & spray around cement slab

## Section B

- \_\_\_1 Mow once a week
- \_\_\_2 Weed eat & spray around 2 ditches & culverts
- \_\_\_3 Weed eat & spray around trees
- \_\_\_4 Weed eat & spray around fire hydrant
- \_\_\_5 Weed eat & spray along sidewalk
- \_\_\_6 Weed eat & spray sidewalk & flowerbed
- \_\_\_7 Weed eat along building
- \_\_\_8 Weed eat along highway
- \_\_\_9 Weed eat along both driveways

## Section C

- \_\_\_1 Mow once a week
- \_\_\_2 Weed eat & spray SE ditch & culvert
- \_\_\_3 Weed eat & spray around trees
- \_\_\_4 Weed eat & spray East side of parking
- \_\_\_5 Weed eat along highway
- \_\_\_6 Weed eat & spray east side of building
- \_\_\_7 Weed eat along driveway

## Section D

- \_\_\_1 Mow once a week
- \_\_\_2 Weed eat & spray S. fence line
- \_\_\_3 Weed eat & spray around (2) 10' x10' slabs
- \_\_\_4 Weed eat around tree
- \_\_\_5 Weed eat & spray around meter can
- \_\_\_6 Weed eat & spray around scoreboard
- \_\_\_7 Weed eat & spray inside & outside of softball fence
- \_\_\_8 Weed eat & spray around pitchers box
- \_\_\_9 Weed eat & spray around backstop
- \_\_\_10 Weed eat & spray around batting cage
- \_\_\_11 Weed eat & spray around dugout
- \_\_\_12 Weed eat & spray around meter can
- \_\_\_13 Weed eat & spray dirt pile
- \_\_\_14 Weed eat & spray under bleachers
- \_\_\_15 Weed eat & spray around press box
- \_\_\_16 Weed eat & spray along sidewalk
- \_\_\_17 Weed eat & spray fence at parking lot

Section E

- \_\_\_1 Weed eat & spray fence line
- \_\_\_2 Spray grass & weeds in parking lot
- \_\_\_3 Spray around light poles
- \_\_\_4 Weed eat & spray sidewalk

Section F

- \_\_\_1 Spray gravel with grass at N. end
- \_\_\_2 Spray playground
- \_\_\_3 Weed eat & spray N. and W. fence (both sides)
- \_\_\_4 Weed eat & spray between modulars
- \_\_\_5 Weed eat & spray between sidewalk and building
- \_\_\_6 Weed eat & spray sidewalks
- \_\_\_7 Weed eat & spray around transformer
- \_\_\_8 Weed eat & spray around gas meter
- \_\_\_9 Weed eat & spray along N. & W. side of school
- \_\_\_10 Weed eat around basketball court
- \_\_\_11 Mow or weed eat between fence & basketball court
- \_\_\_12 Mow & weed eat N.W. corner of gym
- \_\_\_13 Mow & weed eat W of weight room
- \_\_\_14 Mow & weed eat S.W. corner of gym
- \_\_\_15 Mow, weed eat & spray all sidewalks
- \_\_\_16 Spray AG fence
- \_\_\_17 Spray sidewalk
- \_\_\_18 Mow & spray SW corner of Ag shop
- \_\_\_19 Spray cracks along & S of building
- \_\_\_20 Mow, weed eat & spray by greenhouse
- \_\_\_21 Mow, weed eat & spray E. of art room
- \_\_\_22 Weed eat along sidewalk & spray cracks
- \_\_\_23 Mow between art room & driveway
- \_\_\_24 Weed eat & spray along driveway
- \_\_\_25 Weed eat around edges
- \_\_\_26 Weed eat around trees

Section G

- \_\_\_1 Weed eat & spray behind buses
- \_\_\_2 Weed eat & spray fence line
- \_\_\_3 Weed eat ditch & culvert west of bus barn
- \_\_\_4 Weed eat W. side of bus parking
- \_\_\_5 Weed eat & spray center parking stop
- \_\_\_6 Weed eat by road & around tree
- \_\_\_7 Mow 2 ditches
- \_\_\_8 Weed eat 2 ditches
- \_\_\_9 Weed eat around electric pole
- \_\_\_10 Weed eat around parking signs
- \_\_\_11 Spray parking lot
- \_\_\_12 Spray & weed eat culverts
- \_\_\_13 Mow behind district office & bus barn
- \_\_\_14 Weed eat & spray behind district office

Section H

- \_\_\_1 Weed eat & spray S & W fence lines
- \_\_\_2 Weed eat & spray inside & out of baseball fence

Section I

- \_\_\_1 Mow, weed eat & spray S. of shed
- \_\_\_2 Weed eat and spray gravel s of retaining wall
- \_\_\_3 Weed eat & spray under bleachers
- \_\_\_4 Weed eat & spray fences
- \_\_\_5 Weed eat & spray N. & W. of shed
- \_\_\_6 Weed eat & spray fence line inside & out from shed to concession stand
- \_\_\_7 Weed eat & spray fence from football bleachers S. to baseball fence
- \_\_\_8 Weed eat under football bleachers
- \_\_\_9 Spray area in front of bleachers to 5 foot under bleachers
- \_\_\_10 Weed eat & spray around all light poles
- \_\_\_11 Weed eat along all sidewalks
- \_\_\_12 Weed eat around concession stand
- \_\_\_13 Weed eat & spray fence from concession stand to N. corner
- \_\_\_14 Weed eat & spray fence from N. corner to gate
- \_\_\_15 Weed eat & spray fence from football bleachers N. to gate
- \_\_\_16 Weed eat & spray outside of track
- \_\_\_17 Weed eat & spray W. fence line
- \_\_\_18 Mow all around track
- \_\_\_19 Weed eat & spray around scoreboard
- \_\_\_20 Weed eat & spray around breaker panel
- \_\_\_21 Weed eat ditches & culverts
- \_\_\_22 Weed eat along driveway
- \_\_\_23 Mow between driveway & fence

Section J

- \_\_\_1 Mow once a week
- \_\_\_2 Weed eat & spray fence line
- \_\_\_3 Weed eat & spray around containers
- \_\_\_4 Weed eat & spray around discus pads
- \_\_\_5 Weed eat & spray around shotput pads
- \_\_\_6 Weed eat & spray around & on shotput gravel

Section K

- \_\_\_1 Mow once a week
- \_\_\_2 Spray & weed eat fence lines

Access Road

- \_\_\_1 Mow once a week
- \_\_\_2 Weed eat & spray on west side to corner
- \_\_\_3 Weed eat & spray on east side to arrow
- \_\_\_4 Weed eat & spray culverts

All areas

- \_\_\_1 Weed eat & spray as needed
- \_\_\_2 Mow once a week unless otherwise noted
- \_\_\_3 No excessive grass clippings to be left on the ground

